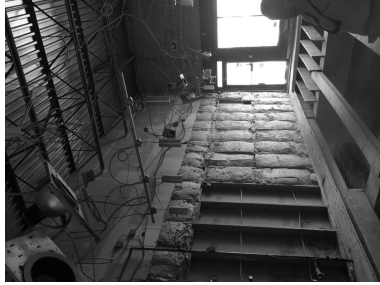
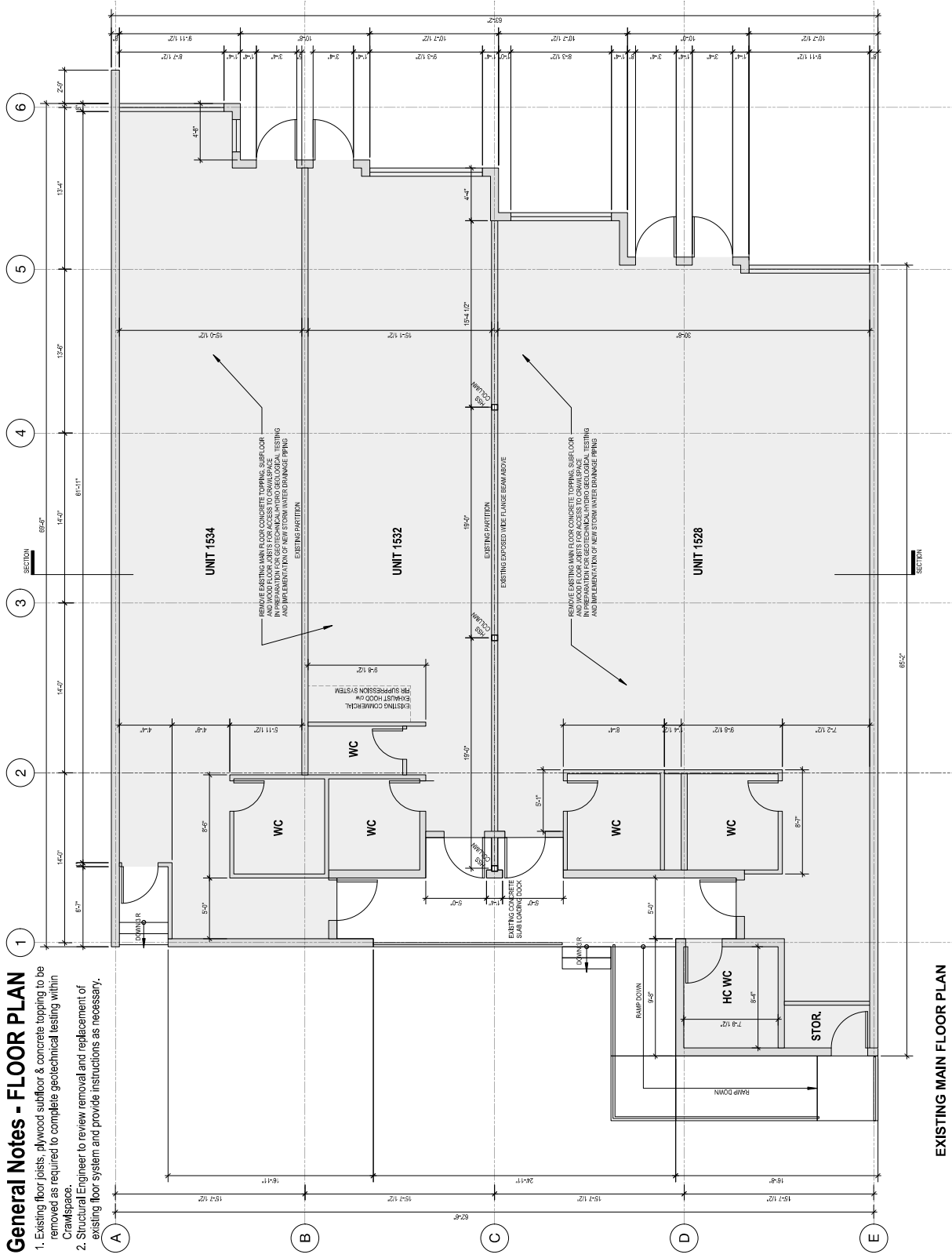


General Notes - FLOOR PLAN

- Existing floor joists, plywood subfloor & concrete topping to be removed as required to complete geotechnical testing within Crawspace.
- Structural Engineer to review removal and replacement of existing floor system and provide instructions as necessary.



partition wall @ unit 1532



rear entry to unit 1532



commercial exhaust hood

EXISTING MAIN FLOOR PLAN